

# Zennio Parameter Copier

## ETS APP

Application program version: [1.1]  
User manual edition: [1.1]\_a

[www.zennio.com](http://www.zennio.com)

# CONTENTS

---

Contents .....	2
Document updates.....	3
1 Introduction .....	4
1.1 Zennio Parameter Copier .....	4
1.2 Installation.....	5
2 Functionality.....	9
2.1 Copy all parameters and group addresses .....	10
2.2 Associate all objects .....	15

## DOCUMENT UPDATES

---

Version	Changes	Page(s)
[1.1]_a	<ul style="list-style-type: none"><li>Copy from pattern is removed.</li></ul>	-
[1.0]_b	<ul style="list-style-type: none"><li>The download process of the ETS App is detailed.</li></ul>	5

# 1 INTRODUCTION

---

## 1.1 ZENNIO PARAMETER COPIER

---

**Zennio Parameter copier** is an ETS application which offers the user to copy settings between devices of the same project, in order to easily parameterise devices based on others already configured. All the functionality described in this document is **only supported by Zennio devices**.

Its main features are:

- **Complete copying** of parameters and group addresses between devices.
- **Automatic assignment of group addresses** for non-associated objects.



### **Important note:**

*This application is a help tool. The algorithms for identifying the correspondence between parameters are not infallible and depend on the constraints and characteristics of the projects. It is essential to manually check the resulting parameterisation, as in certain cases it is not possible to ensure that all parameters and objects are copied correctly.*

## 1.2 INSTALLATION

The installer file can be obtained for free at my.knx.org, in the Shop, in the ETS Apps section, to find the application easily search “Parameter Copier” in the search engine.

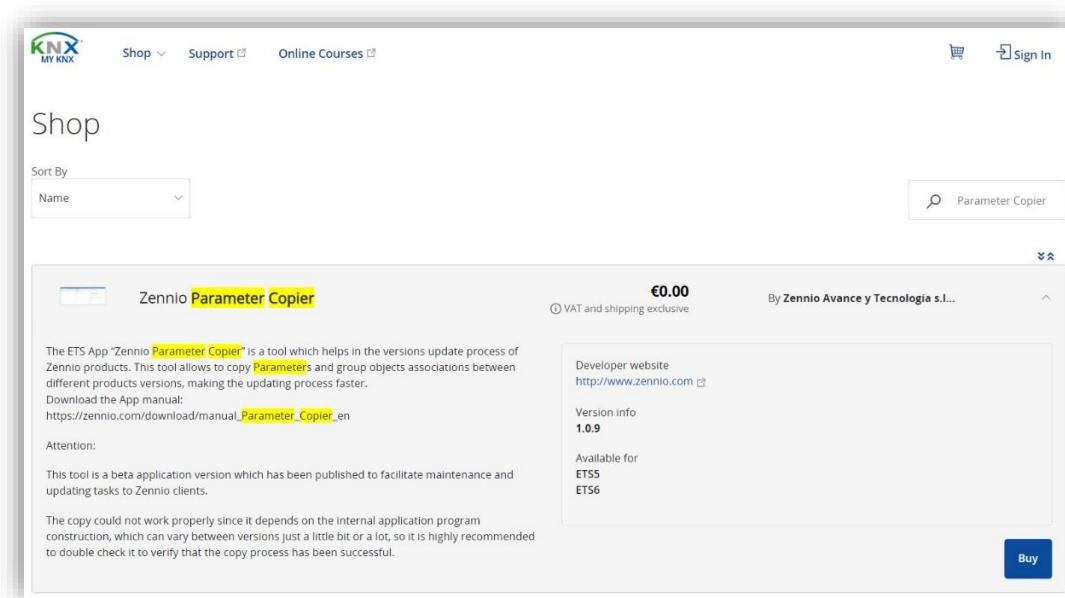


Figure 1. Zennio Parameter Copier in my.knx.org Shop.

After the purchase process, the download file will be available in the **My Account** area, in the **Products** section.

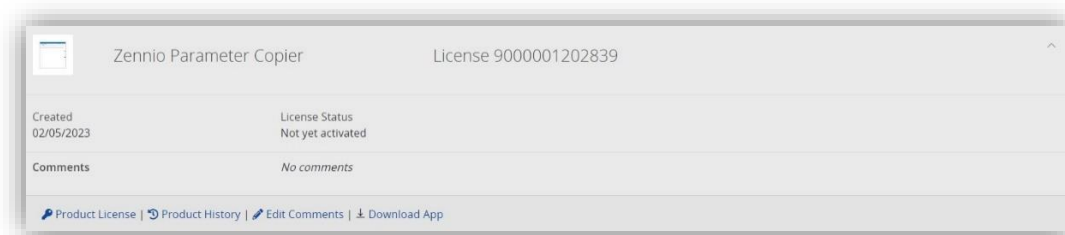


Figure 2. MyKNX - Products.

The steps for a correct **download** of the ETS App *Zennio Parameter Copier* are detailed as follows:

1. Access the ETS main window, select the "License" checkbox, at the bottom right, and check the **number** of the **installed license**:

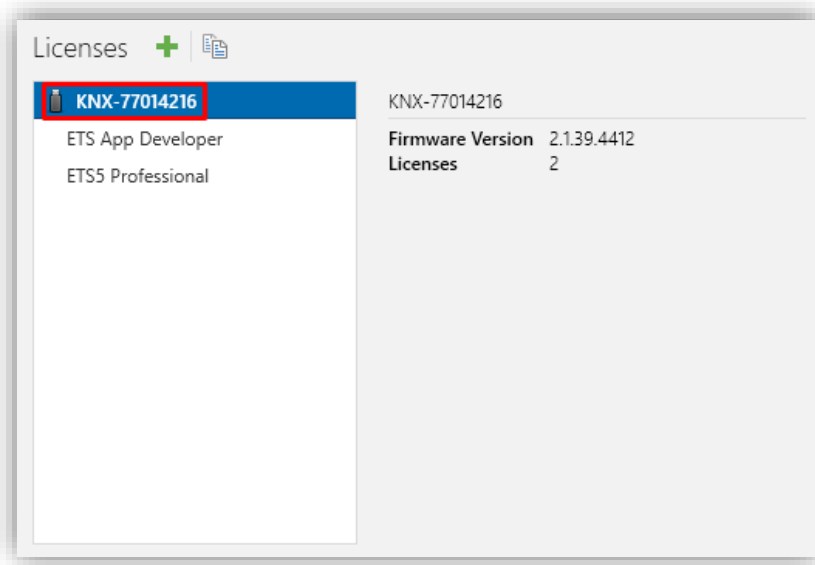


Figure 3. ETS - Licenses.

2. Access to **Product License** and enter the ETS license reference in the ETS App **Product Key** field. After that, the license status will change to “Dongle activated” and the option “Download License” will appear.

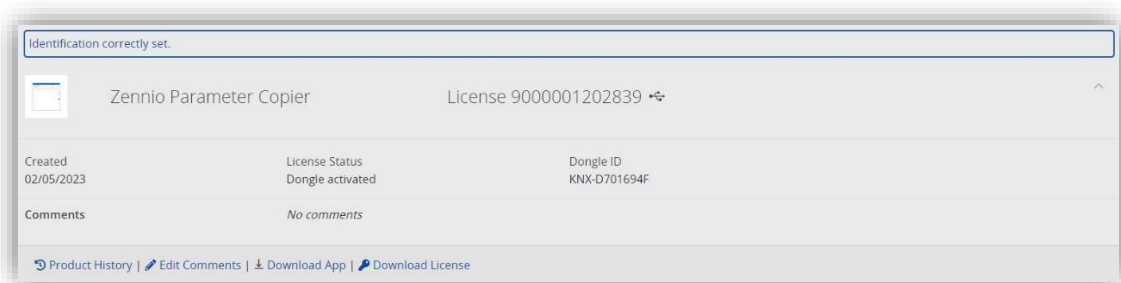

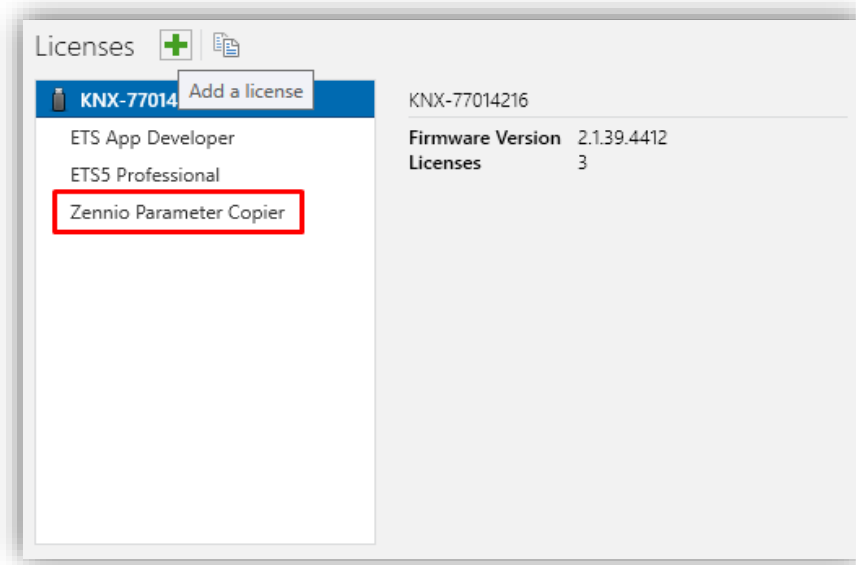


Figure 4. MyKNX – Products after entering the ETS license reference in the Product Key field.

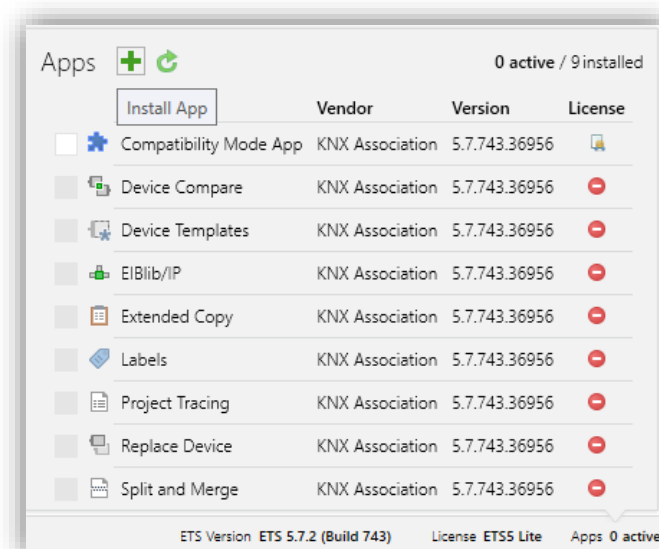
3. Click on "**Download App**" to get the file "**Zennio\_Parameter\_Copier.etsapp**".
4. Click on "**Download Licence**" to get the file generated after linking the ETS App to the ETS licence.
5. Associate the installed ETS license to the ETS App *Zennio Parameter Copier*. For this purpose, access again to the "Licenses" box of the ETS main window, click on the  button (“Add a license”) and add the previously downloaded **.license** file.




**Figure 5.** ETS – Add new ETS App Zennio Parameter Copier license.

Once downloaded, the application will be **installed** in ETS:

1. In the ETS main window, at the right bottom, select the "Apps" checkbox. A pop-up similar to the following will appear:



**Figure 6.** Installation.

2. Click on the button:  ("Install App") and select the file "**Zennio\_Parameter\_Copier.etsapp**".

Once the application is installed, it will appear in the list of applications as shown in Figure 6 and will be available in the **Apps** tab of the toolbar of any project.



**Figure 7.** Complete installation.



## 2 FUNCTIONALITY

Once the application is installed, it can be accessed from the toolbar of a project: **Apps** → **Zennio** → **Zennio Parameter Copier**. When clicking on it, it will open in a new window.

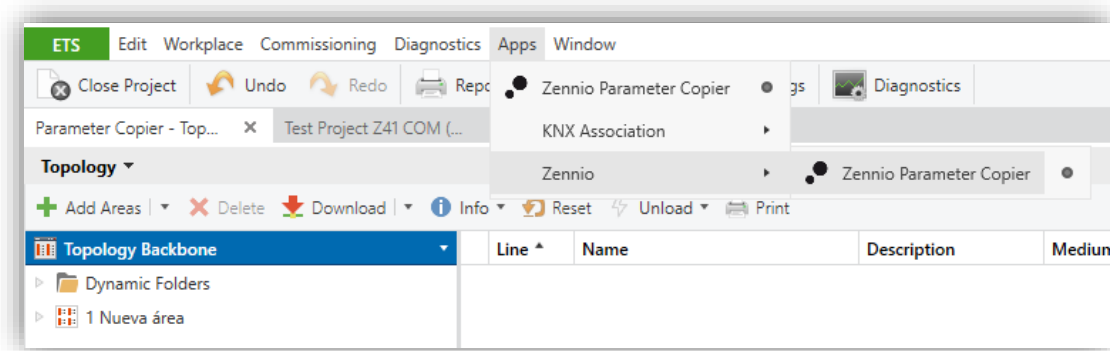


Figure 8. Toolbar >> Apps >> Zennio >> Zennio Parameter Copier.

This window will contain different workspaces and buttons depending on the intended action: **"Copy all parameters and group addresses"** or **"Associate all objects"**. Each of these options is described in the following sections.

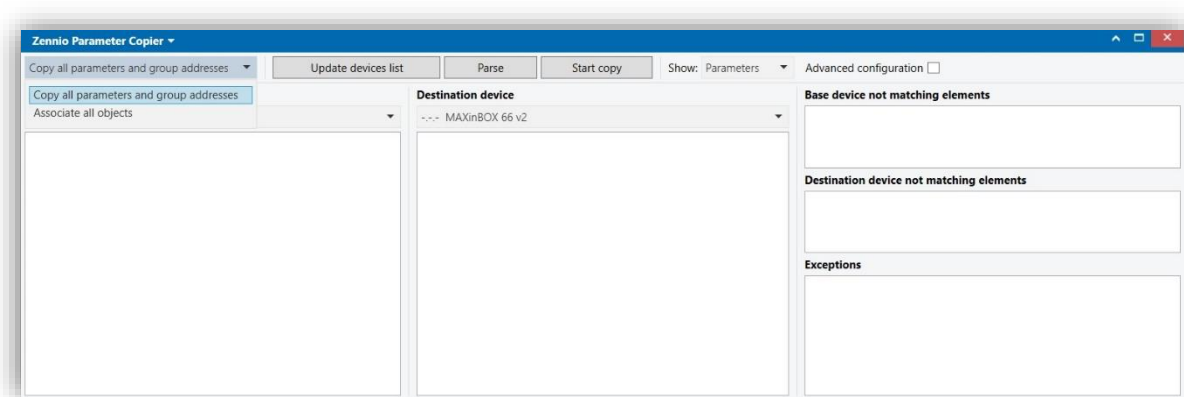


Figure 9. Zennio Parameter Copier.

## 2.1 COPY ALL PARAMETERS AND GROUP ADDRESSES

When the option "Copy all parameters and group addresses" is selected (see section 2), both **parameter values** and object associations to **group addresses** from a device (base device) will be copied to another (destination device).

As this is being the default option, this will be the window shown when the application is launched. The following work areas will be distinguished in it:

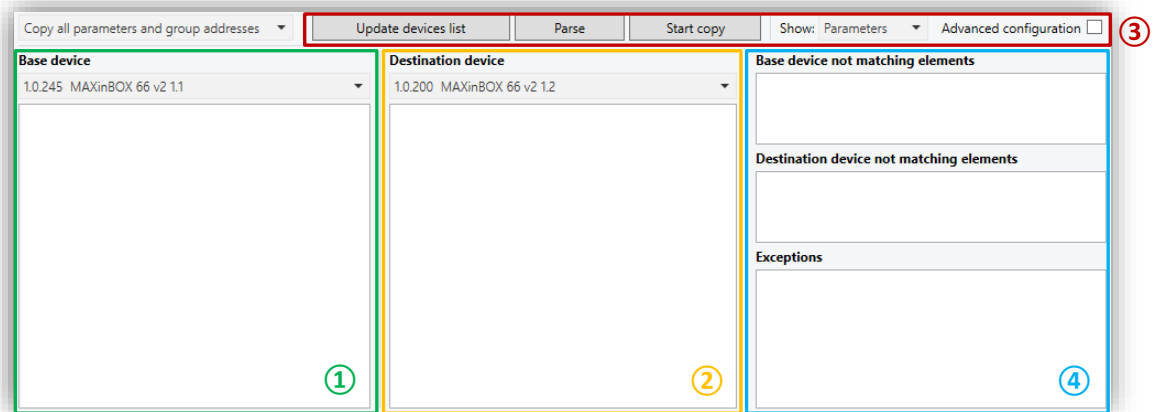


Figure 10. Copy all parameters and group addresses.

- The area marked with the number ① is where the **base device** will be selected: device whose parameters and group addresses are to be copied.
- The area marked with the number ② is where the **destination device** will be selected: device to which the parameterization and group addresses of the base device will be copied.

The above two areas will have the following elements:

- *Devices drop-down selector*: allows selecting a Zennio device from those available in the project. The devices will be listed with the individual address and the name assigned to them.

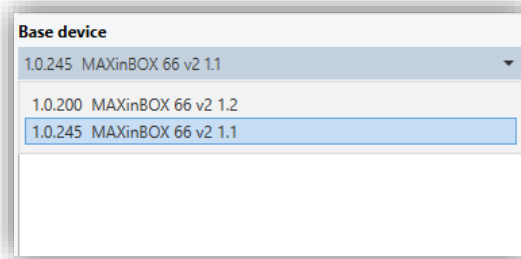


Figure 11. Selector drop-down.

- **List of elements:** shows an organized view of all **parameters**, according to the same tab structure as the ETS parameterisation, **or objects**, listed with their number and assigned group address.

This list will remain empty until you select which items to display, using *selector Show*, and “**Parse**” the base and destination devices. See area ③.

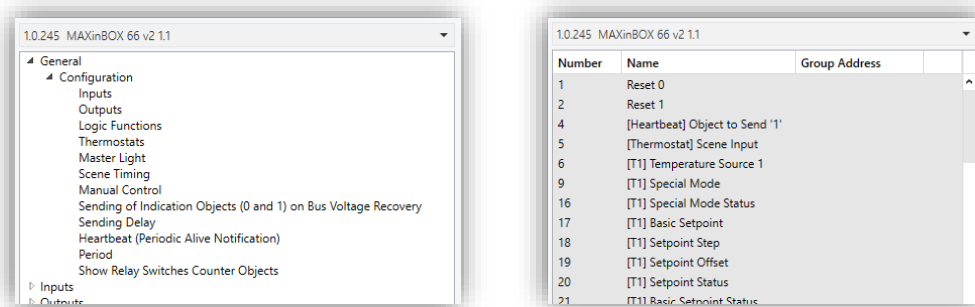


Figure 12. List of parameters / List of objects.

- In the area marked with the number ③ 4 main *buttons* will be differentiated:

- “**Update devices list**”: performs a reading of all Zennio devices available in the project and updates the *devices drop-down selector* of areas ① and ②.

After launching the application, this action will be executed automatically, but a manual update will be necessary if a new device is added or if there are changes in the name or group address of those already available.

- “**Parse**”: performs an analysis of the base and destination devices. Once the analysis is finished, and depending on the option chosen for **Show selector**, the *List of parameters or objects* in areas ① and ② will be showed.

- **“Start copy”**: a complete copying of parameters and group addresses will be performed. If an **analysis** of the base and destination devices has not been already carried out, it will be performed automatically before starting the copy.

While **parsing** and **start copy** processes are running, the ETS App may detect and warn the user of certain events that will stop its execution:

- *“Selected devices shall be different”*: this message will be displayed when the project selected as base and destination device is the same.
- *“Selected devices must have the same Order Number”*: the parsing or copying process is being attempted on two different devices. Although it is not recommended, copying between devices with different order numbers is possible if the “Advanced configuration” option is enabled (see explanation below).

**Note:** On feature-rich devices, the **parsing** and **copying** process may take several minutes.

Once the copy is completed, the ETS App will transfer the result of the copy to the user by means of the following pop-up messages:

- *“N parameters may have not been copied properly”*: indicates if during the copying process a parameter on the target device not, with an out of range value or its value may not have been updated correctly. In addition, these parameters will be listed in the message itself:

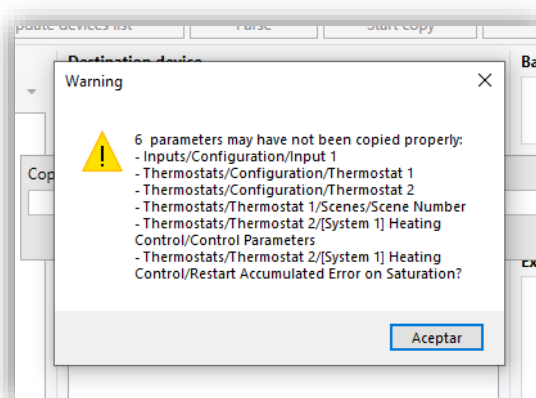


Figure 13. Warning: N parameters may have not been copied properly”.

- “Please check that the copy was successful before downloading”: this warning will always be displayed at the end of a copy as a reminder of the parameterisation review that the user must perform before downloading.

**Note:** In order for certain parameterisations or object associations to be copied correctly, starting a new copy process may be necessary.

- **“Get log error file”**: button that will save in the desired path a .txt file with the errors displayed in the pop-up messages at the end of the copy. This button will be visible after the first copy is made.

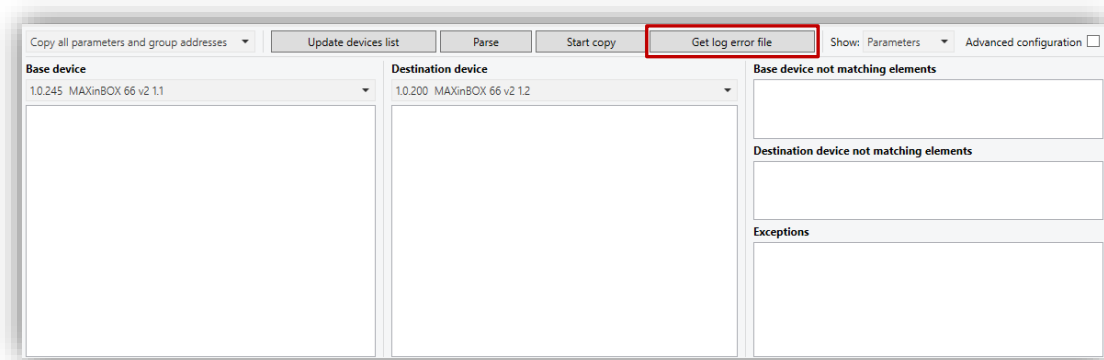


Figure 14. Button “Get log error file”.

In addition to the buttons mentioned above, the area ③ has some additional options:

- Drop-down selector **“Show”** [[Parameters](#) / [Objects](#)]<sup>1</sup>: sets the elements that, after performing the **analyse** action, will be included as a list for copying from the base device to the destination.
- Button **“Advanced configuration”** [[disabled/enabled](#)]: enables the possibility of a complete copy between different devices. If this option is not enabled, only the copying of parameters and group address associations between the same base and destination devices (with different application program) will be allowed.

<sup>1</sup> The default values of each parameter will be highlighted in blue in this document, as follows: [[default/rest of options](#)].

**Important Warning:** Since the internal structures of parameters or objects can be very different in devices with different order number, **it is not possible to assure a correct copy of all parameters and objects in those cases.**

- The area marked with the number ④ shows specific information about which parameters or group addresses will not be copied. This information is grouped in lists:

- **Not matching elements.** The base and destination devices **analysis** process will detect parameters or objects that are not common between them and therefore cannot be copied. After the analysis, these non-matching elements will be grouped in two lists, depending on the device where they have been located: **Base device not matching elements** and **Destination device not matching elements**.
- **Exceptions:** lists all elements that the user has chosen not to be copied.

To include elements to the exception list, double-click on the parameter or object from the *list of elements* in the base device that are not be copied to the destination device. A double-click on the exception removes the item from the list.

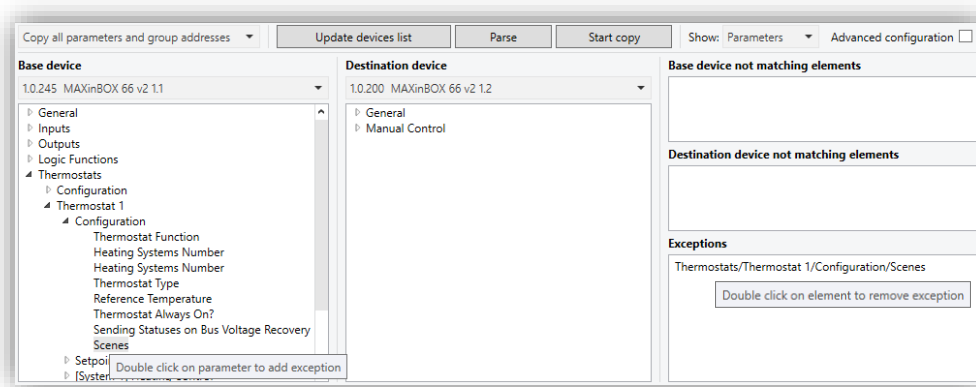


Figure 15. Exceptions.

## 2.2 ASSOCIATE ALL OBJECTS

When the "Associate all objects" option is selected (see section 2), the tool will automatically assign a group address to those objects that have none associated with them.

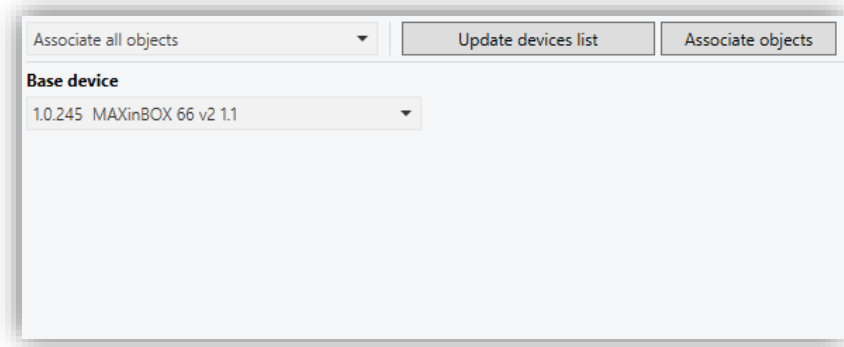


Figure 16. Associate all objects.

The work window consists of the following elements, some of them with functionality analogous to that described in the rest of the windows:

- *Devices drop-down selector.* See section 2.1.
- *Button "Update devices list".* See section 2.1.
- *Button "Associate objects":* automatically associates group addresses starting from the first one that does not exist in the project. The tool will create "Main" and "Intermediate" groups in case they do not exist previously and will assign the associated object name to the new group addresses.

**Note:** *This functionality will only be available for projects with group addresses in three levels: ETS > Overview > "Project" > Details > Group Address Style > Three levels.*



Join and send us your inquiries  
about Zennio devices:

<https://support.zennio.com>

**Zennio Avance y Tecnología S.L.**

C/ Río Jarama, 132. Nave P-8.11  
45007 Toledo. Spain

*Tel. +34 925 232 002.*

*www.zennio.com*  
*info@zennio.com*